

# Test Report

Report No.: CTT190732905EN

Date: Jul. 22, 2019

Page 1 of 3

Applicant: GOYA IMPORTACIONES Y DISTRIBUCIONES S.L

Address: PLATAFORMA LOGISTICA DE ZARAGOZA C/TRAPANI 27 EDIFICIO 50197 SPAIN

Sample Received Date: Jul. 19, 2019

Test Period: Jul. 22, 2019

The following merchandise was (were) submitted and identified by client as:

Sample Name: Blanket

Model No.: 39554

Test Result(s): Please refer to next page(s).

Test Requested and Conclusion(s):

No.	Test Sample	Standard and Requirement	Conclusion(s)
1	Tested materials of submitted samples	Client's requirement (For reference OEKO-TEX Standard 100:2018) - Cleavable Cancerogenic Arylamines (AZO)	PASS

Signed for and on Behalf of CTT



Frank / Lab manager

Consumer Testing Technology Co., Ltd.

This test report is issued by the company subject to its General Conditions of Services printed overleaf or available on request and accessible at [www.cttlab.com](http://www.cttlab.com). Attention is drawn to the limitations of liability, indemnification and jurisdictional issues defined therein. Unless otherwise stated the results shown in this report refer only to the sample(s) tested. Without prior written permission of the company, this test report cannot be reproduced, except in full. Any inquiry about this report, please raise from the date of receipt of the report within 30 days, overdue will not be accept. Items marked with "n" means they are not accredited by CNAS, "s" means the item of subcontractor. All or Part of items of this report are not in the accredited scope of CMA and cannot be as domestic social impartiality proof data

Consumer Testing Technology Co., Ltd.

1st-2nd Floor, Building 5, District B, Yingqi Entrepreneurship Park, No.E21, Xinke Road, Yiwu, Zhejiang, China  
Tel:86-579-8998 6543 Fax:86-579-8998 6547 Email: [zj@cttlab.com](mailto:zj@cttlab.com) Hotline:400 6789 666 [Http://www.cttlab.com](http://www.cttlab.com)



**Test Result(s):**
**Cleavable Cancerogenic Arylamines (AZO) - Client's requirement (For reference OEKO-TEX Standard 100:2018)**
**Method:** EN ISO 14362-1:2017&EN ISO 14362-3:2017, analyzed by Gas Chromatograph-Mass Spectrometry (GC-MS) and High Performance Liquid Chromatograph (HPLC-DAD).

No.	Substances Name	CAS No.	Limit (mg/kg)	Result (mg/kg)
1	biphenyl-4-ylamine/ 4-aminodiphenyl/ xenylamine	92-87-1	20	N.D.
2	benzidine	92-87-5	20	N.D.
3	4-chloro-o-toluidine	95-89-2	20	N.D.
4	2-naphthylamine	91-59-8	20	N.D.
5Δ	o-aminoazotoluene/ 4-o-tolylazo-o-toluidine/ 4-amino-2', 3-dimethylazobenzene	97-56-3	20	N.D.
6Δ	2-amino-4-nitrotoluene/ 5-nitro-o-toluidine	99-55-8	20	N.D.
7	4-chloroaniline/p-chloroaniline	106-47-8	20	N.D.
8	4-methoxy-m-phenylenediamine/2,4-diaminoanisole	615-05-4	20	N.D.
9	4,4'-methylenedianiline/ 4,4'-diaminodiphenylmethane	101-77-9	20	N.D.
10	3,3'-dichlorobenzidine/ 3,3'-dichlorobiphenyl-4,4'-ylenediamine	91-94-1	20	N.D.
11	3,3'-dimethoxybenzidine/ o-dianisidine	119-90-4	20	N.D.
12	3,3'-dimethylbenzidine/ 4,4'-bi-o-toluidine	119-93-7	20	N.D.
13	4,4'-methylenedi-o-toluidine/ 3,3'-Dimethyl-4,4'-diaminobiphenylmethane	838-88-0	20	N.D.
14	6-methoxy-m-toluidine/ p-cresidine	120-71-8	20	N.D.
15	4,4'-methylene-bis-(2-chloroaniline)/ 2,2'-dichloro-4,4'-methylene-dianiline	101-14-4	20	N.D.
16	4,4'-oxydianiline	101-80-4	20	N.D.
17	4,4'-thiodianiline	139-65-1	20	N.D.
18	o-toluidine/ 2-aminotoluene	95-53-4	20	N.D.
19	4-methyl-m-phenylenediamine/ 2,4-toluylenediamine	95-80-7	20	N.D.
20	2,4,5-trimethylaniline	137-17-7	20	N.D.
21	o-anisidine / 2-methoxyaniline	90-04-0	20	N.D.
22◇	4-aminoazobenzene	60-09-3	20	N.D.
23	2,4-xylidine	95-88-1	20	N.D.

This test report is issued by the company subject to its General Conditions of Services printed overleaf or available on request and accessible at [www.ctilab.com](http://www.ctilab.com). Attention is drawn to the limitations of liability, indemnification and jurisdictional issues defined therein. Unless otherwise stated the results shown in this report refer only to the sample(s) tested. Without prior written permission of the company, this test report cannot be reproduced, except in full. Any inquiry about this report, please raise from the date of receipt of the report within 30 days, overdue will not be accept. Items marked with "n" means they are not accredited by CNAS, "s" means the item of subcontractor. All or Part of items of this report are not in the accredited scope of CMA and cannot be as domestic social impartiality proof data

# Test Report

Report No.: CTT190732905EN

Date: Jul. 22, 2019

Page 3 of 3

24	2,6-xylidine	87-62-7	20	N.D.
Conclusion				PASS

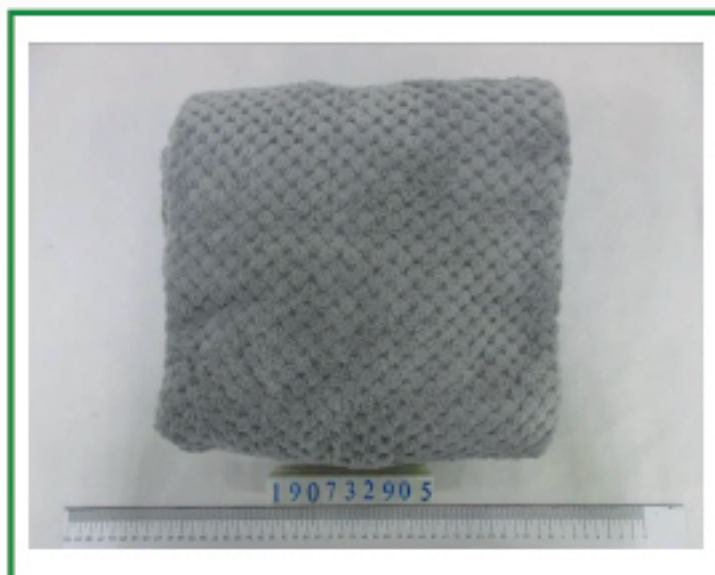
- Note:**
1. mg/kg = milligram per kilogram (ppm).
  2. N.D. = Not Detected (< RL).
  3. RL (Reporting Limit) = 20 mg/kg.
  4. "Δ" = The CAS No. 97-56-3 (No.5) and 99-55-8 (No.6) are further reduced to CAS No.95-53-4 (No.18) and 95-80-7(No.19).
  5. "◇" = Azo colorants that are able to form 4-aminoazobenzene(No.22), generate under the condition of this method aniline and 1, 4-phenylenediamine, therefore, the method of EN ISO 14362-3:2017 was employed to verify the 4-aminoazobenzene.

**Test Material List:**

The following materials apply only to the samples submitted for chemical testing

Material No.	Description	Location
1	Gray synthetic fiber	Blanket

**Photo of Sample:**



\*\*\*End of Report\*\*\*

This test report is issued by the company subject to its General Conditions of Services printed overleaf or available on request and accessible at [www.ctilab.com](http://www.ctilab.com). Attention is drawn to the limitations of liability, indemnification and jurisdictional issues defined therein. Unless otherwise stated the results shown in this report refer only to the sample(s) tested. Without prior written permission of the company, this test report cannot be reproduced, except in full. Any inquiry about this report, please raise from the date of receipt of the report within 30 days, overdue will not be accept. Items marked with "n" means they are not accredited by CNAS, "s" means the item of subcontractor. All or Part of items of this report are not in the accredited scope of CMA and cannot be as domestic social impartiality proof data.

